



HANGCHA FORKLIFT CANADA INC.

Company address:
100-3801 F.-X.-Tessier,
Vaudreuil-Dorion, QC J7V 5V5

Tel: 877-319-4232
info@hcforkliftcanada.com
www.hcforkliftcanada.com



Follow us on
Facebook



Follow us on
YouTube



Follow us on
WeChat



Download "Hangcha
Forklift" App



ISO 45001:2018



ISO 14001:2015



ISO 9001:2015



HANGCHA trucks conform
to the European Safety
Requirements.

2024 VERSION 2/COPYRIGHT 2024

HANGCHA GROUP CO., LTD. reserves the right to make any changes without notice concerning colors, equipment, or specifications detailed in this brochure, or to discontinue individual models. The colors of trucks, delivered may differ slightly from those in brochures.

XF Series Paper Roll Special Forklift

with capacities of 12,000lbs



Making Material Handling Easier
SINCE 1956



XF Series Paper Roll Special Forklift

As a part of the XF Series from Hangcha Group, the Paper Roll Special adds a specialty, large capacity cushion tire truck to our full line of forklifts. This forklift was designed to meet applications where lifting large paper rolls is a part of day to day operation. The Paper Roll Special features a hydraulic oil cooler and a heavy duty paper roll clamp as a part of its design to lift up to 12,000lbs. This cushion forklift also includes the latest advancements from Hangcha. These advancements include LED efficient lighting, a load-sensing hydraulic system, low-emission engine, noise/vibration control, and a new control system. This is the Paper Roll Special from Hangcha Group.



LED Lights and Environmentally-Friendly Materials

LED lights are energy efficient, have a longer service life, and offer a significant increase in performance.

Environmentally-friendly materials are also used to minimize environmental impact.



Maintenance Hatch with a Safety Latch

The maintenance hatch opens wide enough to provide easy serviceability of key components. The safety latch prevents the hatch from compromising operator safety when using the truck.



Large Hand Grip

The large hand grip on the overhead guard is designed to allow the operator to get in and out of the truck safer and easier.



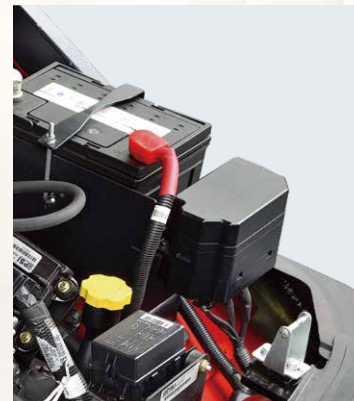
Steering Axle

The steering axle uses large conical bearings on the master pin, buffer blocks, and a large-diameter steering cylinder to substantially increase the reliability and service life of the steering system.



Panoramic Rear View Mirror

The panoramic rear view mirror allows the operator to have wider rear visibility when operating the forklift.



Integrated Fuse Box

The next generation of integrated fuse box has been added to the truck. It offers a better layout, ease of service and maintenance, and is waterproof. The entire truck is also equipped with waterproof connectors to increase the electronics' reliability.



Optimized Cooling System

The cooling system has been designed to maximize cooling and increase the reliability of the engine when working under heavy loads. This system uses an aluminum radiator, vented hood, independent oil cooler, hydraulic oil cooler, optimized heat transfer channel and a dual-hole counterweight to increase cooling efficiency.





North American EPA Certified Engine

The PSI 4.3L LPG engine is in compliance with North American EPA Standards. Although it meets these standards, the engine still has the power and torque to get the job done. This engine is also electronically controlled to increase the fuel economy and the reliability of the trucks.



OKAMURA Transmission

The world-renown OKAMURA transmission, with the Power Take-Off (PTO) feature, is used in our Box Car Special forklift. This transmission was chosen as apart of our forklift's design for its reliability. The gear pump is also extremely efficient.



Large LCD Instrument Panel

The new LCD instrument display has additional functions and offers more stable performance. Important information including the running status of the entire truck and a check engine light can be displayed. This allows the operator to easily understand the status of the truck for easy maintenance. Next to the LCD panel is a low LPG fuel warning indicator.



Ergonomic Design

The small diameter, adjustable steering wheel, electro-hydraulic steering, and the combination switch increase the ease of operation and operator comfort substantially. The hydraulic levers are positioned to allow for easy operation. The mast is also designed to increase operator visibility.



Enhanced Counterweight

Engineers have increased the weight of the counterweight on the Paper Roll Special to 880lbs (400kg). By increasing the service weight of the forklift, Hangcha's engineers were able to increase the uplift capacity of the truck. This allows operators to safely lift heavy paper rolls.

Standard Configuration

<div>/ Traction Unit</div> <div>/ Small Diameter Steering Wheel</div> <div>/ Integrated Combination Switch</div> <div>/ Extended Hand Grip</div> <div>/ Adjustable Steering Wheel</div> <div>/ Mechanical Parking Brake (with self-lock)</div> <div>/ Suspension Seat with Safety Belt</div> <div>/ Large Capacity Aluminum Radiator</div> <div>/ Dynamic Load Sensing System</div> <div>/ Suspension Integral Overhead Guard</div> <div>/ Whirlwind High Efficiency Air Filter</div> <div>/ Hydraulic Oil Suction Filter</div> <div>/ Rain Cover for the Overhead Guard</div> <div>/ Safe Filter Element</div> <div>/ Inclined Oil Way Latching Valve</div> <div>/ Panoramic Rear View Mirror</div>	<div>/ Highly Efficient Exhaust Muffler</div> <div>/ Hydraulic Oil Dipstick</div> <div>/ Smooth Cushion Tire</div> <div>/ Access/Exit Safe Step</div> <div>/ Highly Efficiency LED Combination</div> <div>Front and Rear Lights</div> <div>/ Large Rubber Pedal Pad</div> <div>/ Full Floating Transmission</div> <div>/ Maintenance-Free Battery</div> <div>/ Transmission Oil Filter</div> <div>/ Hydraulic Oil Return Filter</div> <div>/ Combined LCD Displays</div> <div>/ Gearbox Dipstick</div> <div>/ Maintenance Hatch Spring</div> <div>/ Integrated Controller</div> <div>/ Gearbox Oil Cooler</div> <div>/ Clipboard</div> <div>/ Strobe Light</div>	<div>/ Non-Asbestos Brakes</div> <div>/ Electro-Hydraulic Steering</div> <div>/ Charging Reminder</div> <div>/ Suspended Operation Pedal</div> <div>/ Oil Gauge</div> <div>/ Water Thermometer</div> <div>/ Cup Holder</div> <div>/ Preheating Indication</div> <div>/ Limited Free Lift 2 Stage Mast</div> <div>/ Charge Indication</div> <div>/ Standard Fork</div> <div>/ Timer</div> <div>/ Standard Carriage</div> <div>/ Engine Oil Pressure Alarm</div> <div>/ Standard Back Rest</div> <div>/ Gearbox Oil Temperature Alarm</div> <div>/ Maintenance Reminder</div>	<div>/ Load Safety Valve</div> <div>/ Horn</div> <div>/ Soft Landing System</div> <div>/ Reverse Buzzer</div> <div>/ Mast Lifting Buffer Device</div> <div>/ Tilt Piston Rod Jacket</div> <div>/ Fan Protector</div> <div>/ Rear Grip with Horn Button</div> <div>/ Front Acoustic Hood of Steering Wheels</div> <div>/ Low LPG Fuel Warning Indicator</div> <div>/ Soundproof Pad on Maintenance Hatch</div> <div>/ Swing-Out LP Bracket</div> <div>/ Operator Presence Sensing System (OPS)</div> <div>/ Hydraulic Oil Cooler</div>
--	--	---	---

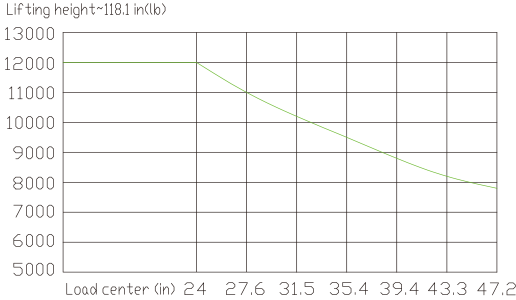
Options

<div>/ Customizable Paint Colors</div> <div>/ LED Rear Working Light</div> <div>/ Fire Extinguisher</div> <div>/ High-Low Overhead Guard</div> <div>/ Fingertip Controls</div>	<div>/ Radiator Screen</div> <div>/ Wrapped Exhaust</div> <div>/ Pre-Cleaner</div> <div>/ Blue Light</div>	<div>/ Counterweight Grill</div> <div>/ Swing-Down LP Bracket</div> <div>/ Traction Tires</div> <div>/ Non-Marking Cushion Tires</div>	<div>/ Wider Carriage</div> <div>/ Belly Pan</div> <div>/ Hydraulic Accumulator</div> <div>/ Paper Roll Clamp</div>
--	--	--	---



XF Series Paper Roll Special Forklift Specification

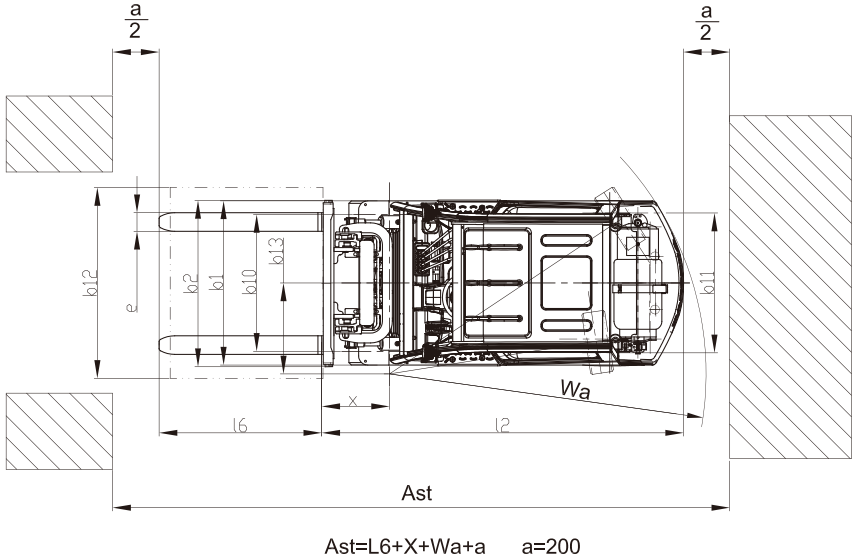
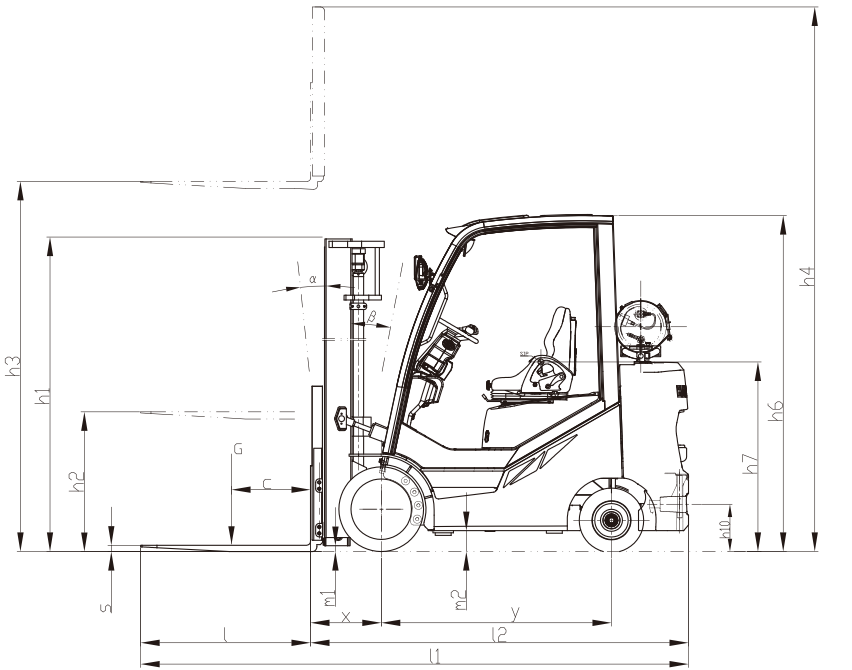
Distinguishing Marks	1.1	Manufacturer		HANGCHA GROUP CO.,LTD.	
		HCFA Model		FP55CPRS	
	1.2	Manufacturer's Type Designation		CPYD55-XW24B-CBP	
	1.3	Drive: electric (battery or mains), diesel, petrol, fuel gas		LP6	
	1.4	Operator Type: hand, pedestrian, standing, seated, order-picker		Seated	
	1.5	Rated Capacity/Rated Load	Q	lb (kg)	12000(5500)
	1.6	Load Centre Distance	c	in(mm)	24(600)
	1.7	Load Distance, centre of drive axle to fork	x	in(mm)	18.5(470)
Weight	1.8	Wheelbase	y	in (mm)	70.5(1790)
	2.1	Service Weight		lb(kg)	17637(8000)
	2.2	Axle Loading, laden front/rear		lb(kg)	25772/3990(11690/1810)
Tires, Chassis	2.3	Axle Loading, unladen front/rear		lb(kg)	6392/11245(2900/5100)
	3.1	Tires: solid rubber, superelastic, pneumatic, polyurethane			Cushion
	3.2	Tire Size, front			22×12-16
	3.3	Tire Size, rear			18×8-12.125
	3.4	Wheels, number front / rear (x = driven wheels)			2×/2
	3.5	Tread, front	b10	in (mm)	43.9(1115.2)
Dimensions	3.6	Tread, rear	b11	in(mm)	44.3(1125)
	4.1	Tilt of Mast/Fork Carriage Forward/Backward	α/β	(°)	5/6
	4.2	Height, mast lowered	h1	in (mm)	86.2(2190)
	4.3	Free Lift	h2	in(mm)	4.7(120)
	4.4	Lift	h3	in (mm)	118.1(3000)
	4.5	Height, mast extended	h4	in (mm)	166.3(4225)
	4.6	Height of Overhead Guard	h6	in (mm)	90.5 (2298)
	4.7	Seat Height Relating to SIP	h7	in (mm)	51.1(1299)
	4.8	Coupling Height	h10	in (mm)	14.6(370)
	4.9	Overall Length	l1	in (mm)	154.3(3920)
	4.10	Length to Face of Forks	l2	in (mm)	106.3(2700)
	4.11	Overall Width (without backrest)	b1	in(mm)	55.9(1420)
	4.12	Fork Dimensions	s/e/l	in (mm)	2.4×6×48(60×150×1220)
	4.13	Fork Carriage DIN 15 173 --- ISO 2328, class/type A,B			Class 4A
	4.14	Backrest Width	b2	in (mm)	51.7(1314)
	4.15	Fork-Carriage Width	b3	in(mm)	49.2(1250)
	4.16	Distance between Fork-Arms	b5	in (mm)	12.2-46.9(310-1190)
	4.17	Ground Clearance, laden, below mast	m1	in (mm)	3.1(80)
	4.18	Ground Clearance, centre of wheelbase	m2	in (mm)	5.9(149)
Performance Data	4.19.1	Aisle Width for Pallets 40" x 48" Crossways	Ast	in (mm)	151.6(3850)
	4.19.2	Aisle Width for Pallets 32" x 48" Crossways	Ast	in (mm)	159.4(4050)
	4.20	Turning Radius	Wa	in(mm)	93.5(2380)
	4.21	Minimum Ploting Distance	b13	in(mm)	25.3(642)
	5.1	Travel Speed, laden/unladen	mph(km/h)		11.4/12.1(18.3/19.4)
	5.2	Lift Speed, laden/unladen	ft/min(m/s)		78.7/88.6(0.40/0.45)
	5.3	Lowering Speed, laden/unladen	ft/min(m/s)		98.4/88.6(0.50/0.45)
Combustion Engine	5.4	Drawbar Pull, laden/unladen	N		48000/18400
	5.5	Gradeability, laden/unladen	%		34/16
	5.6	Service Brake			Hydraulic
	5.7	Parking Brake			Mechanical
Additional Data	6.1	Engine Manufacturer/Type			PSI 4.3L LPG CERT
	6.2	Engine Power	hp (kW)		105(77)
	6.3	Rated Speed	r/min		2300
	6.4	Number of Cylinders/Displacement	(-)/(cm ³)		6/4294
	6.5	Generator	A		70
	6.6	Vehicle Electrical System Voltage	V		12
	6.7	Battery Voltage/Nominal Capacity	V/Ah		12/60
	6.8	Rated Torque	N·m/r/min		332.85/1400
	6.9	Transmissions Manufacturer			OKAMURA
	6.10	Transmissions Type			Powershift
	6.11	Stage FWD/RVS			1/1
Additional Data	7.1	Operating Pressure for Attachments	psi(MPa)		2683(18.5)
	7.2	Hydraulic Tank - Capacity (drain & refill)	gal(liter)		26.4(100)
	7.3	Fuel tank Capacity	gal(liter)		NA



12,000lbs Paper Roll Special Mast:

Type	Model	Max. Fork Height	Overall Height				Free Lift		Front Overhang	Tilt Range	Capacity	
			Lowered	Extended		Without Backrest	With Backrest	F/R			Load Capacity at 24 in (600mm)	
				Without Backrest	With Backrest							
												in (mm)
Limited Free Lift 2 Stage Mast	XBC55M250	98.4(2500)	76.4(1940)	130.5(3315)	146.7(3725)	4.7(120)	4.7(120)	18.5(470)	5/6	12000(5500)		
	XBC55M280	110.2(2800)	82.3(2090)	142.3(3615)	158.5(4025)	4.7(120)	4.7(120)	18.5(470)	5/6	12000(5500)		
	XBC55M300	118.1(3000)	86.2(2190)	150.2(3815)	166.3(4225)	4.7(120)	4.7(120)	18.5(470)	5/6	12000(5500)		
	XBC55M330	129.9(3300)	95.3(2420)	162(4115)	178.1(4525)	4.7(120)	4.7(120)	18.5(470)	5/6	12000(5500)		
	XBC55M340	133.9(3400)	97.2(2470)	165.9(4215)	182.1(4625)	4.7(120)	4.7(120)	18.5(470)	5/6	12000(5500)		
	XBC55M350	137.8(3500)	99.2(2520)	169.9(4315)	186(4725)	4.7(120)	4.7(120)	18.5(470)	5/6	12000(5500)		
	XBC55M370	145.7(3700)	103.1(2620)	177.8(4515)	193.9(4925)	4.7(120)	4.7(120)	18.5(470)	5/6	12000(5500)		
	XBC55M400	157.5(4000)	109.1(2770)	189.6(4815)	205.7(5225)	4.7(120)	4.7(120)	18.5(470)	5/6	12000(5500)		
Full Free Lift 3 Stage Mast	XBC55N400	157.5(4000)	82.1(2085)	192.1(4880)	205.7(5225)	47.4(1205)	33.9(860)	19.9(505)	5/6	12000(5500)		
	XBC55N430	169.3(4300)	86(2185)	203.9(5180)	217.5(5525)	51.4(1305)	37.8(960)	19.9(505)	5/6	12000(5500)		
	XBC55N450	177.2(4500)	88.6(2250)	211.8(5380)	225.4(5725)	53.9(1370)	40.4(1025)	19.9(505)	5/6	12000(5500)		
	XBC55N470	185(4700)	91.1(2315)	219.7(5580)	233.3(5925)	56.5(1435)	42.9(1090)	19.9(505)	5/6	12000(5500)		
	XBC55N480	189(4800)	93.1(2365)	223.6(5680)	237.2(6025)	58.5(1485)	41.7(1060)	19.9(505)	5/6	12000(5500)		
	XBC55N500	196.9(5000)	97.6(2480)	231.5(5880)	245.1(6225)	63(1600)	49.4(1255)	19.9(505)	5/6	12000(5500)		
	XBC55N530	208.7(5300)	101.6(2580)	243.3(6180)	256.9(6525)	66.9(1700)	50.2(1275)	19.9(505)	5/6	12000(5500)		
	XBC55N550	216.5(5500)	105.5(2680)	254.3(6460)	264.8(6725)	70.9(1800)	57.3(1455)	19.9(505)	5/6	12000(5500)		
	XBC55N600	236.2(6000)	115.6(2935)	276.2(7015)	284.4(7225)	80.9(2055)	67.3(1710)	19.9(505)	5/6	11600(5300)		

With sideshifter, subtract 990lbs (450kg). With integral sideshifter, subtract 550lbs (250kg).



Ast=L6+X+Wa+a a=200